

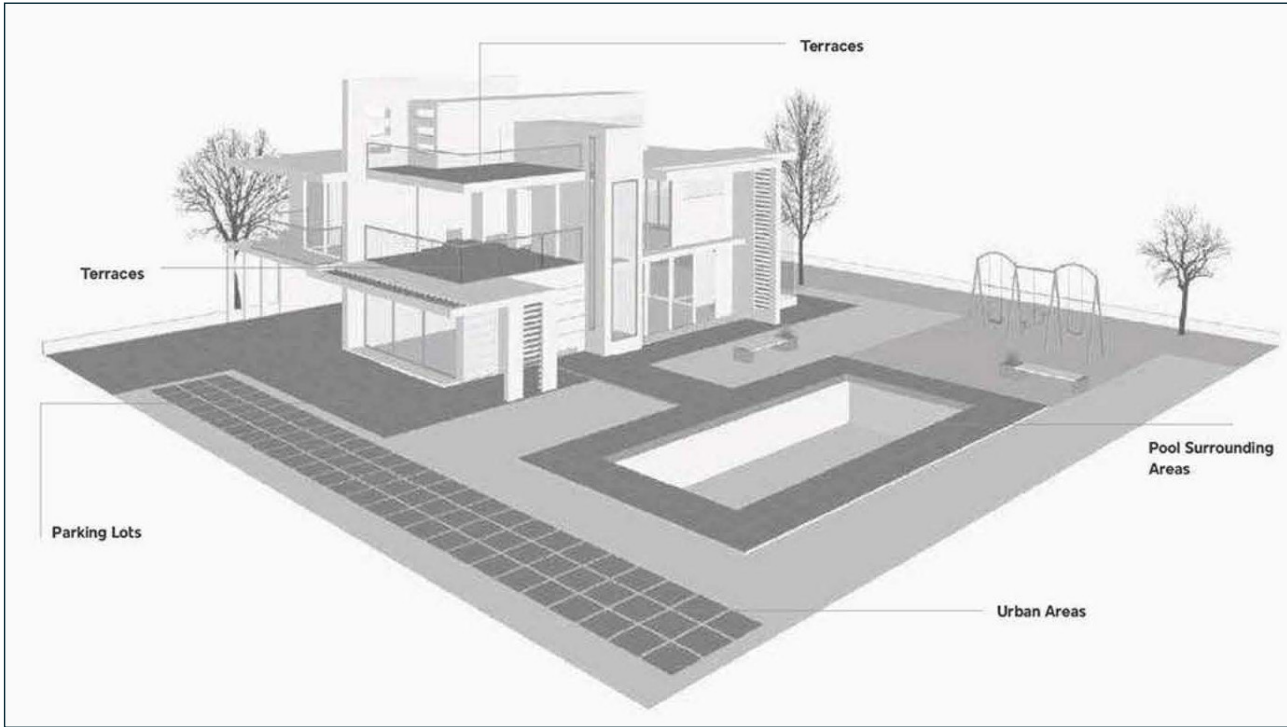


LSH LANDSCAPE
SUPPLY HUB

OUTDOOR PORCELAIN TILES


60 x 60 x 2cm, 60 x 90 x 2cm, 60 x 120 x 2cm





SYSTEM AND SURFACES FEATURES

-  Easy to Install & Remove
-  High Mechanical Resistance
-  Wear & Abrasion Resistance
-  Resistance to Chemicals
-  Colour Resistance to Sunlight Exposure
-  Extremely High Resistance to Breaking Load
-  Easy to Install
-  Easy to Clean
-  Frost Resistance
-  Anti-Slip Surface
-  Stain Resistant

 **R11** | **20MM** | 60 x 60 x 2cm, 60 x 90 x 2cm, 60 x 120 x 2cm
Outdoor Porcelain Tiles

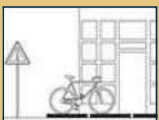
APPLICATION & SOLUTIONS



Gardens & Public Areas



Car Parks



Urban Areas



Industrial Areas



Paths & Public Walkways



Pool Surrounding Areas



Seaside Resorts



Terraces



20 mm OUTDOOR PORCELAIN

R11

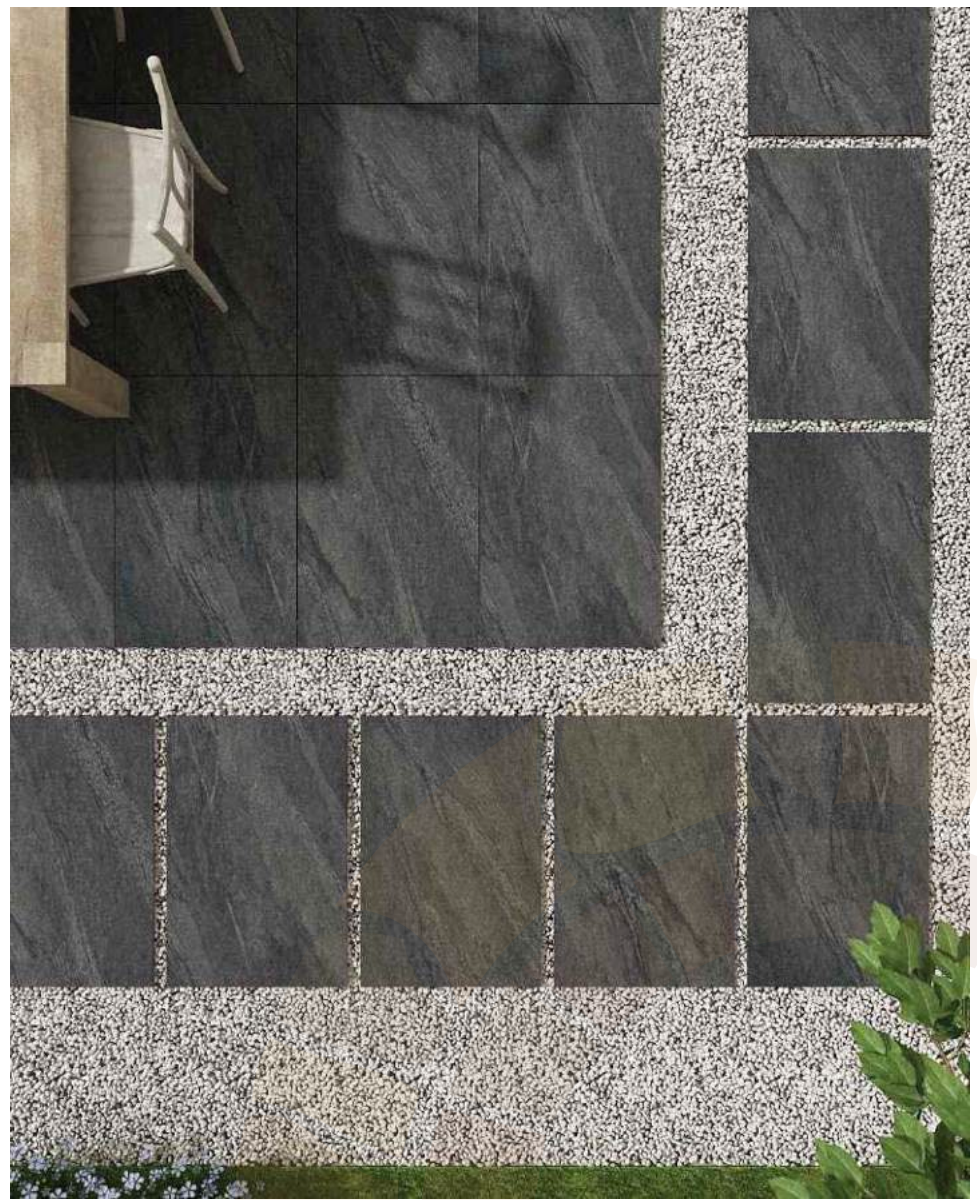


TOWN CREMA

20 mm OUTDOOR PORCELAIN

R11

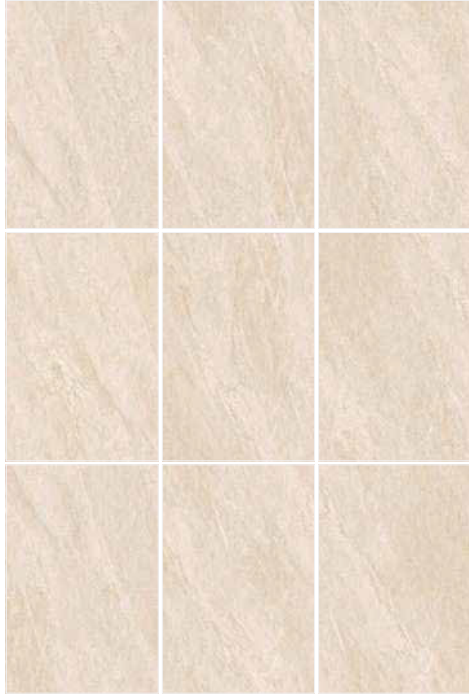
TOWN LGY



TOWN ANTHRACITE

TOWN

TOWN CREMA RANDOM



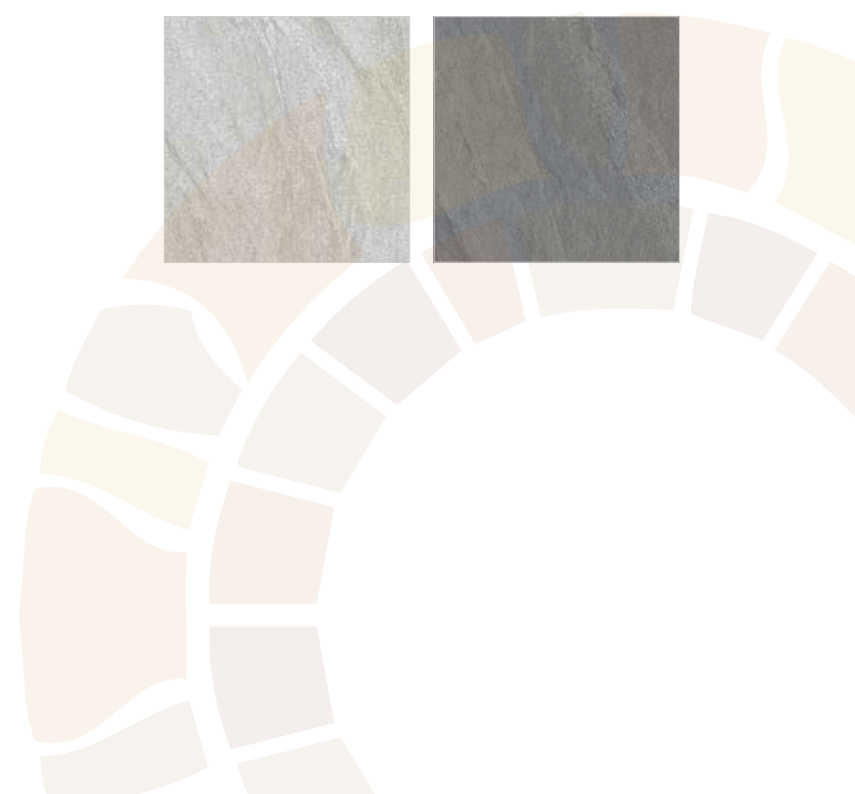
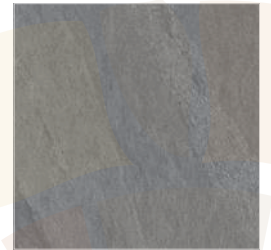
TOWN CREMA



TOWN LGY



TOWN ANTHRACITE

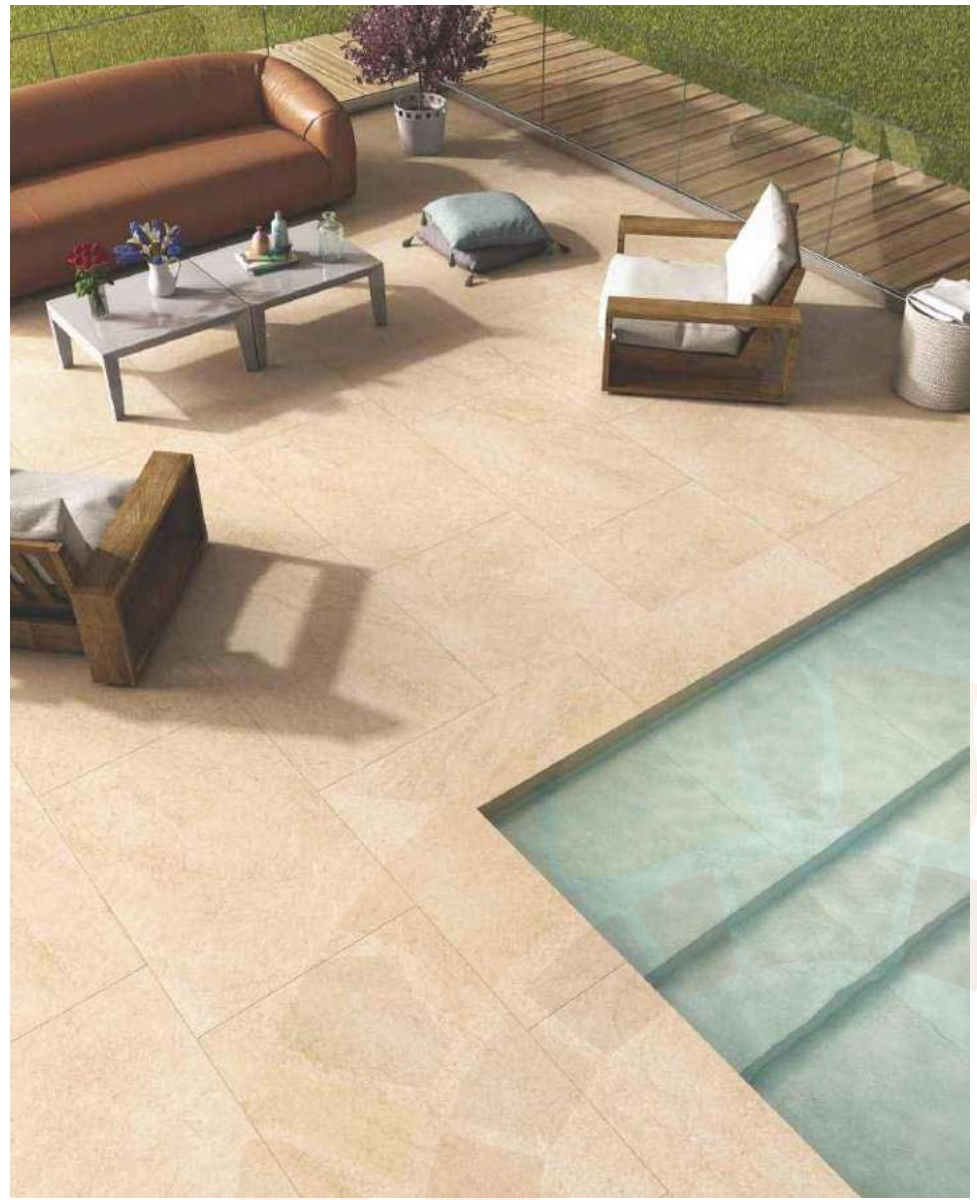


20 mm OUTDOOR PORCELAIN

R11

DESERT RIDGE

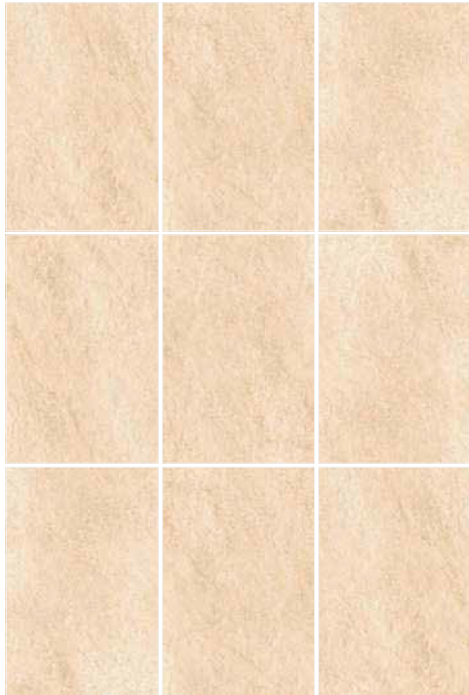
DESERT RIDGE GREY



DESERT RIDGE BEIGE

DESERT RIDGE

DESERT RIDGE BEIGE RANDOM



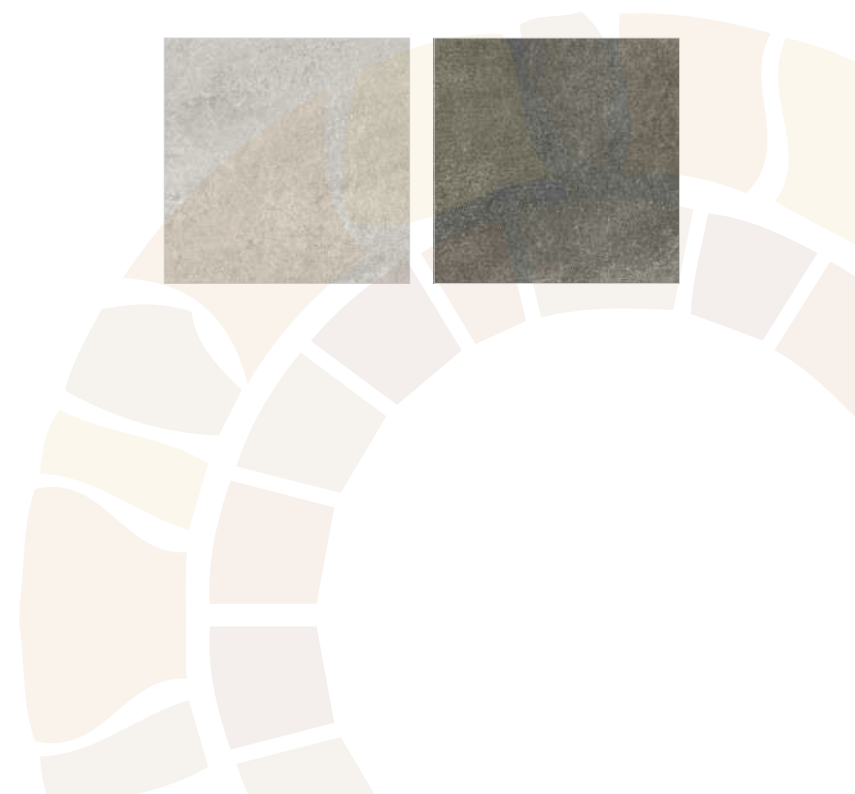
DESERT RIDGE BEIGE



DESERT RIDGE GREY



DESERT RIDGE NERO





CARBON GREY

R11

20mm OUTDOOR PORCELAIN

CARBON

CARBON GREY





R11

20 mm OUTDOOR PORCELAIN

CARBON

CARBON DARK GREY



CARBON DARK GREY

CARBON



CARBON WHITE



CARBON WHITE



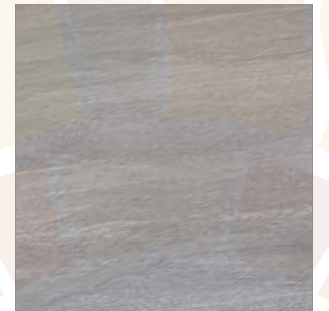
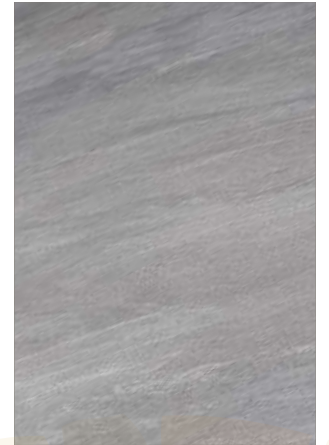
20mm OUTDOOR PORCELAIN



KANDLA GREY



MOUNTAIN GREY



MOUNTAIN GREY

R11

20mm OUTDOOR PORCELAIN



RAJ GREEN



RAJ GREEN



NATURAL SLATE

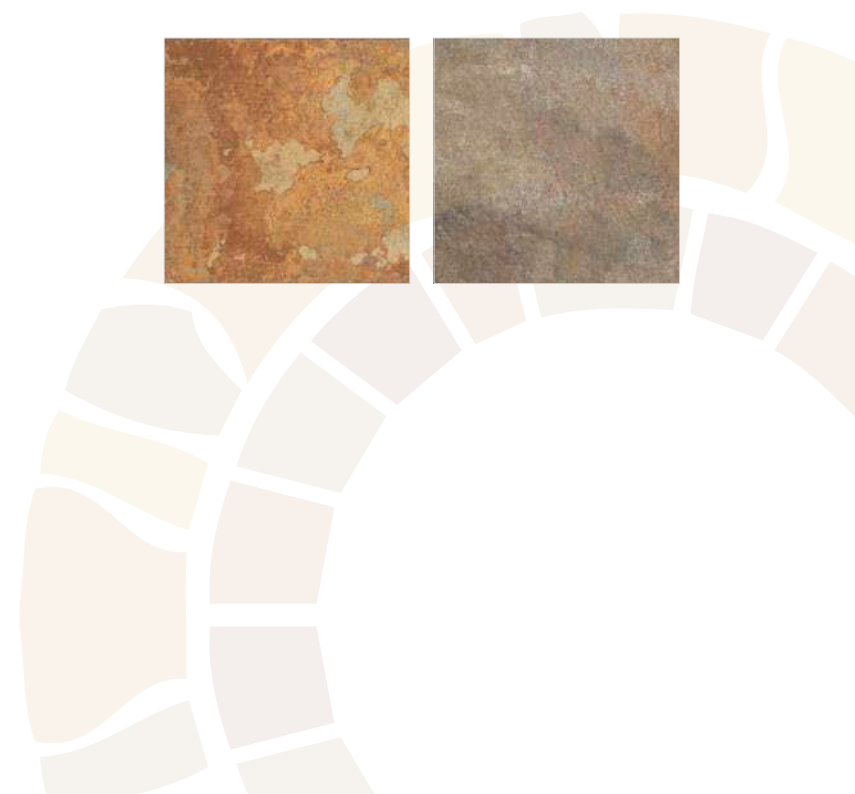
R11

20mm OUTDOOR PORCELAIN

NATURAL SLATE



TERRA RUSTICA





TERRA RUSTICA

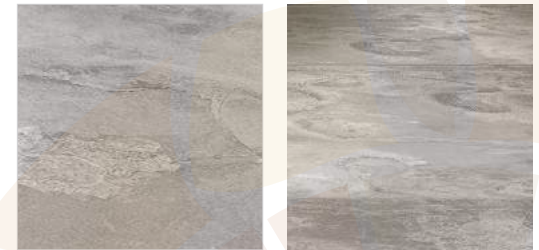


SMOKE FUSION GREY

R11

20mm OUTDOOR PORCELAIN

SMOKE FUSION GREY





MIDNIGHT BLACK

R11

20mm OUTDOOR PORCELAIN

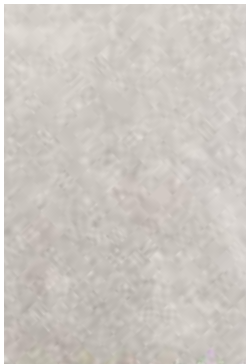
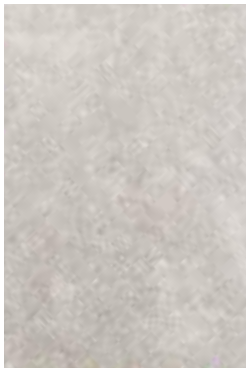
MIDNIGHT

MIDNIGHT BLACK



MIDNIGHT

MIDNIGHT GREY



MIDNIGHT GREY



20 mm OUTDOOR PORCELAIN

R11



CHARCOAL MIST

BELIZE

BELIZE BLACK



BELIZE GREY



20 mm OUTDOOR PORCELAIN

R11



ROCCIA CREAM



CHARCOAL MIST AGAIN



20 mm OUTDOOR PORCELAIN

R11



AOSTA CREMA



20 mm OUTDOOR PORCELAIN

R11



GLACIER WHITE



DUNSTON BEIGE



20 mm [▲] _▼ OUTDOOR PORCELAIN

R11



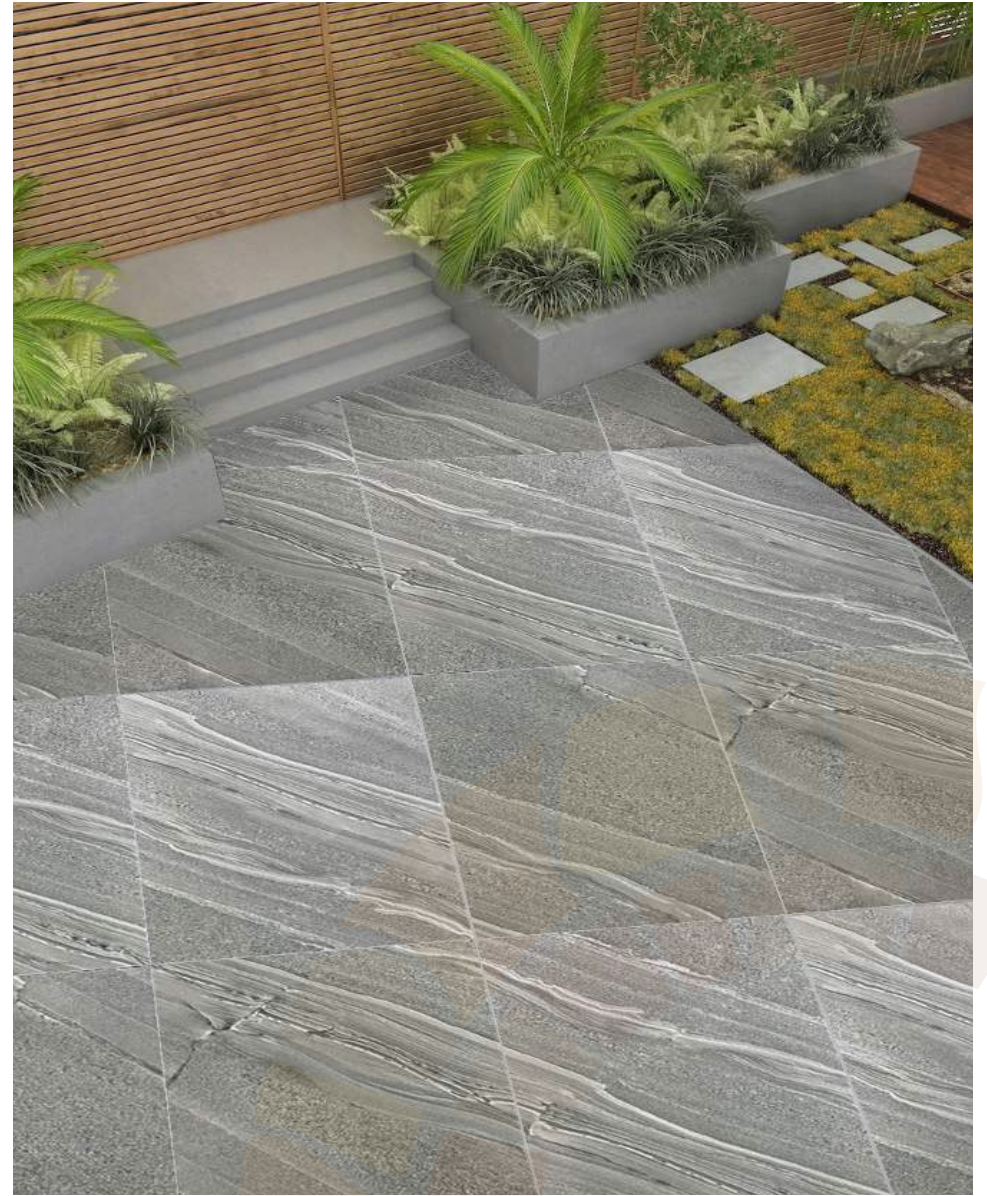
PEAK GREY

20mm [▲] _▼ OUTDOOR PORCELAIN

R11

TORNADO

TORNADO WHITE



TORNADO GREY



20 mm [▲]
OUTDOOR
PORCELAIN _▼

R11



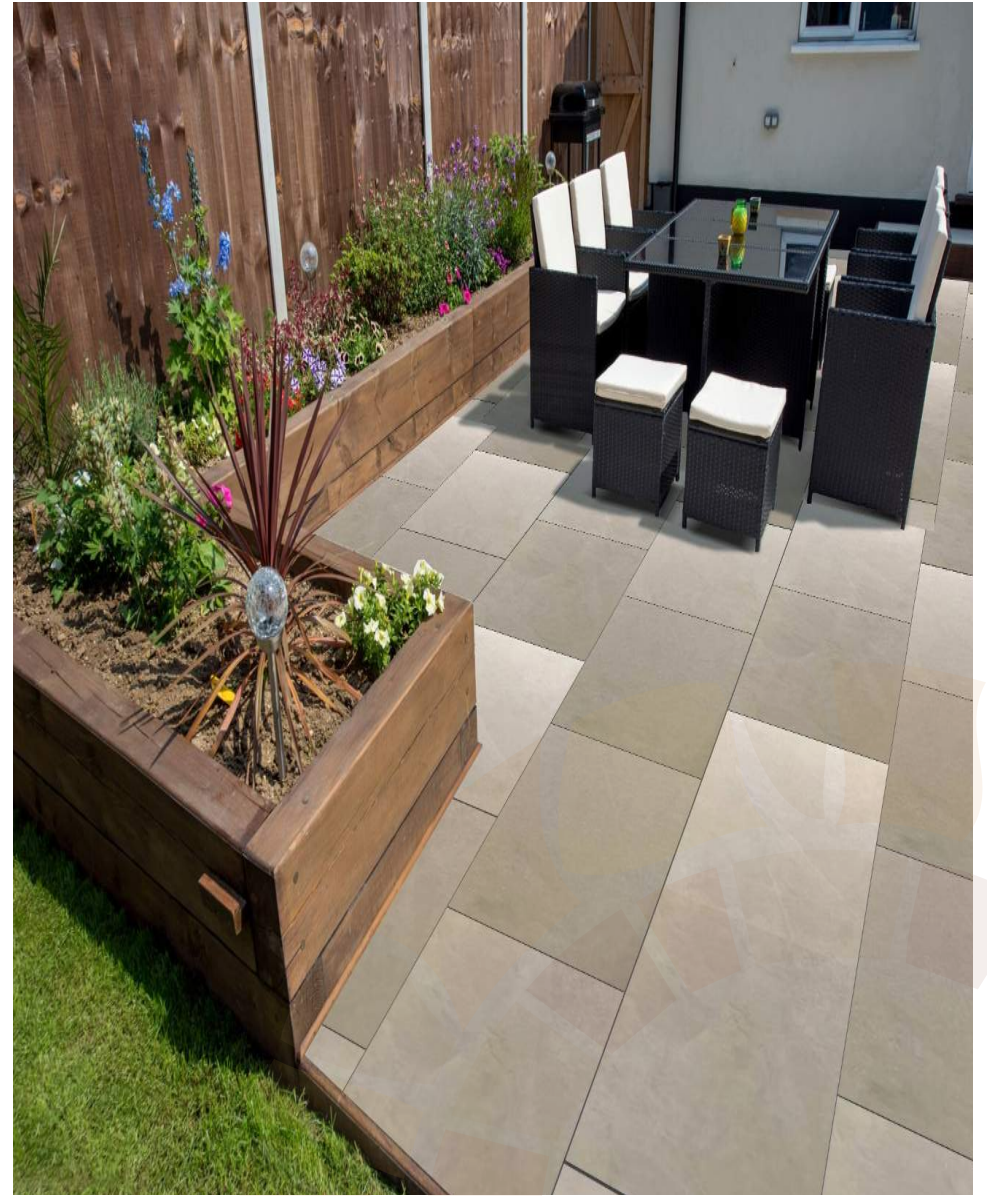
RIO GREY

20mm OUTDOOR PORCELAIN

R11

RIO

RIO NERO



RIO BEIGE



SMOKE GREY



TECHNICAL CHARACTERISTICS

Following the EN 14411 (ISO13006) norms and test cases INI ISO 10545 appendix G for ceramic tiles dry pressed with low water absorption E≤0, 5% Broup Bla.

Sr. No.	TEST CONDUCTED	TEST RESULTS	TEST REQUIREMENTS AS PER IS 15622 : 2006	Remarks
1	Water absorption (% by mass)	Average : 0.17	-	Based on the results of water absorption the tested tiles conformed to Gr. B Ib (0.08% ≤ 3%) of IS 15622:2006. Further test results were delivered as per requirements of Gr. B Ib
2	Modulus Of Rupture (MOR) N/mm ² Span Length = 580 mm Average thickness of the tiles measured = 19.81 mm	Average : 39.0 N/MM ²	-	Passed the test
3	Breaking Strength (N) Span Length = 580 mm Average thickness of the tiles measured = 19.81 mm	Average : 8090.0 N	(Gr. B Ib) For thickness > 7.5 mm 1200 N minimum	Passed the test
4	Scratch Hardness Surface (Mohs' scale)	No. 7	(Gr. B Ib) For commercial application 6 minimum, Home application 5 minimum	Passed the test
5	Thermal Shock Resistance	None of the tiles as tested showed any defects on surface at the end of the 10th cycle.	(Gr. B Ib) Tiles specimens should not show any visible defect when subjected to thermal shock resistance test as per test method IS 13630 : 2006 (Part 5) with immersion	Passed the test
6	Bulk Density (gm/cc)	Average : 2.302	IS 13630 (Part 2) : 2006	-
7	Co-efficient of Thermal Expansion from ambient Temperature to 100oC	L = 4.4956 (10 ⁻⁶ K ⁻¹) B = 4.6883 (10 ⁻⁶ K ⁻¹)	-	Passed the test
8	Straightness of Sides (facial sides) The maximum deviation from straightness in percent related to the corresponding work sizes	+ 0.05 % (Max) - 0.08 % (Max)	(Gr. B Ib) S > 410 cm ² ± 0.1 %	Passed the test
9	Rectangularity The maximum deviation from straightness in percent related to the corresponding work sizes	+ 0.10 % (Max) - 0.10 % (Max)	± 0.1 %	Passed the test
10	Surface Flatness The maximum deviation from flatness in percent (a) Centre of curvature related to diagonal calculated from work size. (b) Edge of curvature related to the corresponding work size (c) Warpage related to the diagonal calculated from the Work Size	+ 0.17 % (Max) + 0.10 % (Max) - 0.14 % (Max) + 0.09 % (Max) - 0.06 % (Max)	± 0.2 % ± 0.2 % ± 0.2 %	Passed the test Passed the test Passed the test
11	Chemical resistance Five test specimens were treated with following solns. (a) Centre of curvature related to diagonal calculated from work size. (b) Edge of curvature related to the corresponding work size (c) Warpage related to the diagonal calculated from the Work Size Five test specimens were treated with following solns. 1. Household Chemicals a) Ammonium Chloride soln. (100 gm/l) b) Standard cleaning Agent soln., (as per procedure) 2. Swimming pool salts a) Sodium Hypochlorite Soln. (20 mg / l) b) Copper Sulphate Soln. (20 mg / l) 3. Acids a) Hydrochloric acid Soln. 3% (v/v) b) Citric acid Soln. (200 mg / l) 4. Alkali Potassium hydroxide soln., (200 mg / l)	+ 0.17 % (Max) + 0.10 % (Max) - 0.14 % (Max) + 0.09 % (Max) - 0.06 % (Max) No visual changes observed after immersion for 6 hrs., pencil lines removed with soft dry cloth. No visual changes observed after immersion for 6 hrs., pencil lines removed with soft dry cloth. No visual changes observed after immersion for 6 hrs., pencil lines removed with soft dry cloth. No visual changes observed after immersion for 7 days, pencil lines removed with soft dry cloth. No visual changes observed after immersion for 6 hrs., pencil lines removed with soft dry cloth. No visual changes observed after immersion for 7 days, pencil lines removed with soft dry cloth. No visual changes observed after immersion for 7 days, pencil lines removed with soft dry cloth.	± 0.2 % ± 0.2 % ± 0.2 % "Class - AA" min. "Class - AA" min. "Class - AA" min. "Class - AA" min. - - -	Passed the test Passed the test Passed the test Conformed to "Class-AA" Conformed to "Class-AA" Conformed to "Class-AA" Conformed to "Class-AA" Conformed to "Class-AA" Conformed to "Class-AA" Conformed to "Class-AA"

Sr. No.	TEST CONDUCTED	TEST RESULTS	TEST REQUIREMENTS AS PER IS 15622 : 2006	Remarks
12	Skid Resistance / Surface Slip Resistance (a) Condition of Test Surface : Tile Surface was cleaned thoroughly be wet cloth followed by dry cloth and ensured that the surface is completely clean and dryd the time of testing. (b) Direction of Test (1) Parallel to sides (4 Measurements) (2) Diagonal to sides (4 Measurements)	Coefficient of friction μ 1) 0.83 2) 0.78 3) 0.77 4) 0.79 5) 0.76 6) 0.75 7) 0.76 8) 0.76	As per ISO 10545 Part - 17	-
13	Moisture expansion in (mm / mtr.)	0.00	Passed the test	-
14	Skid Resistance/ Surface Slip Resistance BS EN Standard specification EN14411 :2016 (Group B)a	-	R-11	R-11

PACKAGING DETAILS :

S.No	SIZE (MM)	Pcs/ Box	Weight/Box	Sqm/Box	Box/PLT	Weight/PLT	PLT/CONT	Box/CONT	Sqm/PLT	Sqm/CON	Weight/CON
1	600x600x20mm	2	32.75	0.72	32	1048	27	864	23.04	622.08	28296
2	900x600x20mm	1	24.25	0.54	40	970	29	1160	21.6	626.4	28130
3	1200x600x20mm	1	32.75	0.72	30	982.5	29	870	21.6	626.4	28492.5

PATIO PACK:

SIZE (MM)	Box/PLT	Weight/PLT	PLT/CONT	Sqm/PLT	Sqm/CON	Weight/CON
900x600	18	950	30	20.94	628.2	28500
600x600	18					
600x295	18					
295x295	18					

900x600	13	750	38	14.78	561.64	28500
600x600	13					
600x295	13					
295x295	9					



Looking for more information or didn't find your desired product? Contact us today, we'd love to help.

Email: Landscapesupplyhub@gmail.com

LANDSCAPE SUPPLY HUB | Wandhills Avenue | Skelton | TS12 2LQ

